

## Basic Multi Monitor

**3G-SDI**  
Future

**HD-SDI**

**SD-SDI**

**Dual Link**

**CiNEliTE II**



The cabinet is sold separately.

## LV 5770 MULTI MONITOR

### GENERAL

The LV 5770 is a multi monitor that can be customized with a variety of units to meet your needs.

The LV 5770 is highly cost effective because it supports full-format 3G-SDI, HD dual link, HD-SDI, and SD-SDI signals. The LV 5770 has a variety of features including simultaneous monitoring of two SDI signals, SDI signal frame capture, lipsync measurement, Pic Moni Output, and improved flexibility in laying out the display, all of which provide you with leading-edge technology.

### FEATURES

- **XGA Display and DVI-D Output**

The LCD display is a 6.3-inch XGA screen (the effective resolution is 1024 × 768). In addition, the screen images are transmitted from a DVI-D connector that supports single link TMDS, so the screen image can be displayed larger than is possible on the LV 5770 through the use of an external LCD monitor display.

- **Pic Moni Output**

The input SDI signal can be generated as a Pic Moni Output signal. (This requires the LV 5770SER08 option or the LV 5770SER09 option.) However, analog composite input (LV 5770SER03) cannot be generated as a Pic Moni Output signal.

- **Frame Capture and Screen Capture Features**

The LV 5770 is equipped with a frame capture feature, which captures single frames in an SDI signal. Frames can be captured manually or automatically when errors occur. This feature is suitable for performing data analysis when errors occur. The LV 5770 is also equipped with a screen capture feature, which captures the entire display as still-image data.

- **External Control Connectors (Future)**

The LV 5770 has two external control connectors: an Ethernet port and a remote control connector. The Ethernet interface can be used to control the LV 5770 remotely over TELNET, perform file transfers over FTP, control the LV 5770 remotely and detect errors over SNMP, as well as perform other operations all from the connected PC. The remote control connector can be used to load presets, switch the input signal, and transmit errors.

- **Headphone Jack**

The headphone jack can be used to monitor audio. (This requires the LV 5770SER41 optional unit.)

### A Wide Variety of Factory Option Units (Sold separately)

- **LV 5770SER08  
SDI INPUT\***

The 3G, HD dual link, HD, and SD-SDI formats are supported. Two inputs can be displayed overlaid or side by side. Two input SDI signals can be generated from two outputs. Also, input A or B, whichever is selected, can be generated as a Pic Moni Output signal.

- **LV 5770SER09  
SDI INPUT/EYE\***

In addition to the LV 5770SER08 features, eye patterns can also be displayed.

(The eye pattern display can be used on one of the two input SDI signals that you select.)

- **LV 5770SER41  
DIGITAL AUDIO (Loudness feature)**

Embedded audio and external digital audio are supported. (The eight I/O connectors—16 channels—are switched between input and output in groups of four connectors—8 channels.)

- **LV 5770SER42  
ANALOG AUDIO**

Up to 8 channels of analog audio are supported. (The LV 5770 must be combined with the LV 5770SER41 unit.)

- **LV 5770SER03  
COMPOSITE VIDEO INPUT**

NTSC/PAL video signals are supported.

\* The LV 5770SER08 and LV 5770SER09 cannot be installed in the LV 5770 at the same time.

# SPECIFICATIONS

# LV 5770

## Video Output Connectors

### DVI-D Output Connector

**Output Connector:** One DVI-D connector  
**Output Signal:** Digital signal of the LCD display  
**Resolution:** XGA (1024 × 768)  
**Signal Format:** Single link TMDS  
**DDC:** Not supported  
**HOT PLUG Detection:** Not supported

### Pic Moni Output Connector (LV 5770SER08 or LV 5770SER09 Option)

**Output Connector:** One type A connector  
**Output Signal:** Selected SDI input (channel A or B) generated as Pic Moni output

**DDC, HOT PLUG Detection Feature, CEC, ARC, HEAC, Lipsync:** Not supported

**Audio:** SDI embedded audio channels 1 to 8 embedded in HDMI signals (LPCM only)

\* Analog composite input (LV 5770SER03) cannot be generated as a Pic Moni Output signal.  
 \* 720p/24, 1080PsF/30, 1080PsF/29.97, 1080PsF/25, 1080PsF/23.98, 1080p (2048 × 1080)/24, 1080p (2048 × 1080)/23.98, 1080PsF (2048 × 1080)/24, and 1080PsF (2048 × 1080)/23.98 are not supported.

## Control Connectors

### USB Port

**Specification:** USB 2.0  
**Supported Media:** Only USB memory devices are supported.  
**Function:** Used to save captured data, event logs, preset data, and data dumps.

### Ethernet Port (Future)

**Compliant Standard:** IEEE802.3  
**Supported Protocols:** TELNET, FTP, SNMP, HTTP  
**I/O Connector:** RJ-45  
**Function:** Used to control the LV 5770 from a PC and monitor errors and other events  
**Types:** 10Base-T, 100Base-TX

### Remote Control Connector

**Function:** Used to recall presets, switch the video input system, switch between inputs A and B, and transmit alarms.  
**Control Signal:** LV-TTL level (low active)  
**Input Voltage Range:** 0 to 5 VDC  
**Control Connector:** 15-pin D-sub (female)

## LCD

**LCD Type:** 6.3-inch color TFT  
**Display Format:** XGA. The effective resolution is 1024 × 768.  
**Backlight Brightness Switch:** High and low  
**Auto Shutoff:** LCD can be automatically turned off after a set period of time.

## Screen Capture

**Function:** Captures the display  
**Display:** Displays only the captured image or overlays the captured image over the input signal

**Media:** Internal memory (RAM) and USB memory  
 Only one screen capture can be stored in the internal memory.  
**Data Output:** Screen captures can be saved as bitmap files to USB memory, or they can be saved in a file format that the LV 5770 can load.  
**Data Input:** Data saved to USB memory can be loaded and displayed on the LV 5770.

## Presets

**Presets:** All panel operations can be stored in memory(\*1)  
**Number of Presets:** 30  
**Copying:** Preset configurations can be copied as a group to or from USB memory.

\*1 The power on/off status

## Alarm Output

**Display:** The fan alarm indication is displayed when the fan stops rotating.  
**Remote Control Connector:** When an error occurs or the fan stops rotating, a signal is transmitted from the remote control connector to indicate this.

## Front Panel

**Key LEDs:** All keys are constantly dimly lit. The selected key lights more brightly.  
**Power Switch:** Electronic switch (which remembers whether the instrument is on or off)  
**Last Memory:** Backs up the panel settings to memory

## Environmental Conditions

**Operating Temperature:** 0 to 40 °C  
**Operating Humidity:** 85 %RH or less (no condensation)  
**Operating Environment:** Indoor use  
**Operating Altitude:** Up to 2000 m  
**Overvoltage Category:** II  
**Pollution Degree:** 2

## Power Requirements

**Voltage:** 90 to 250 VAC, 50 Hz/60 Hz  
**Power Consumption:** 120 Wmax.

## Dimensions and Weight

215 (W) × 133 (H) × 435 (D) mm (excluding protruding parts)  
 8 ½ (W) × 5 ¼ (H) × 17 ½ (D) inch  
 Approx. 4 kg (8.8 lbs.; excluding options and accessories)

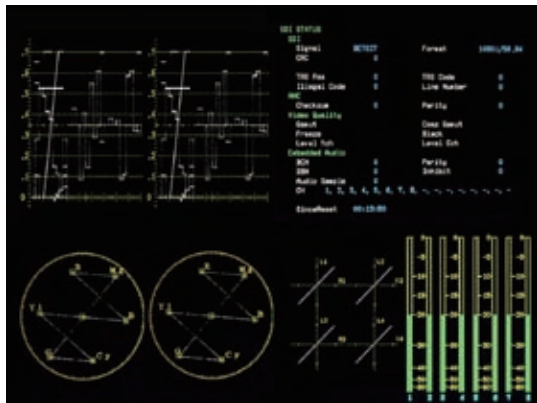
## Accessories

Instruction manual ..... 1  
 Power cord ..... 1  
 Cover/inlet stopper ..... 1  
 Rack-mount, ANSI screw ..... 2  
 15-pin D-sub connector ..... 1  
 15-pin D-sub connector cover ..... 1

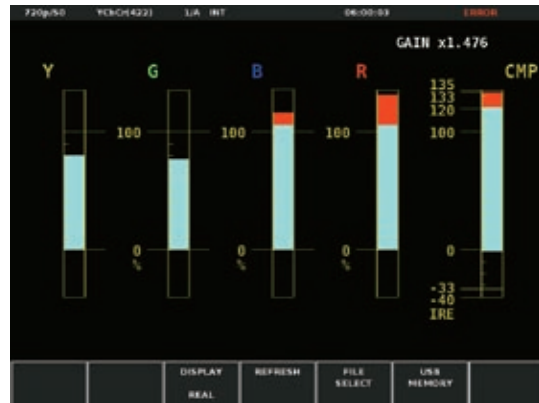
## Sold Separately

**Cabinet:** LR 2427B (with handle)  
 LR 2404A (without handle)  
**Rack mount adapter:** LR 2700AI

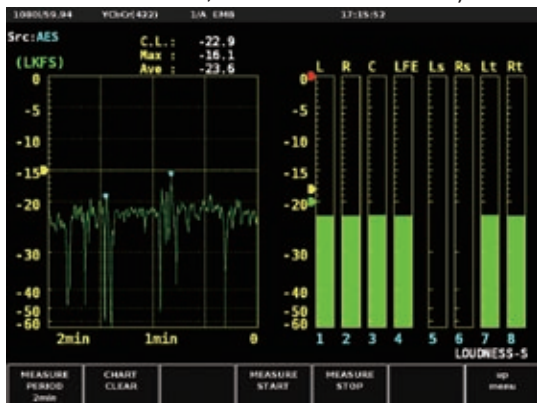
## ■ Display Examples



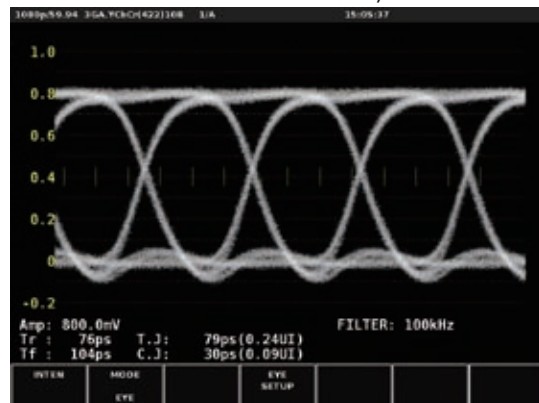
2-channel simultaneous display (with the LV 5770SER08, LV 5770SER09, and LV 5770SER41 installed)



5 bar display (with the LV 5770SER08 and LV 5770SER09 installed)

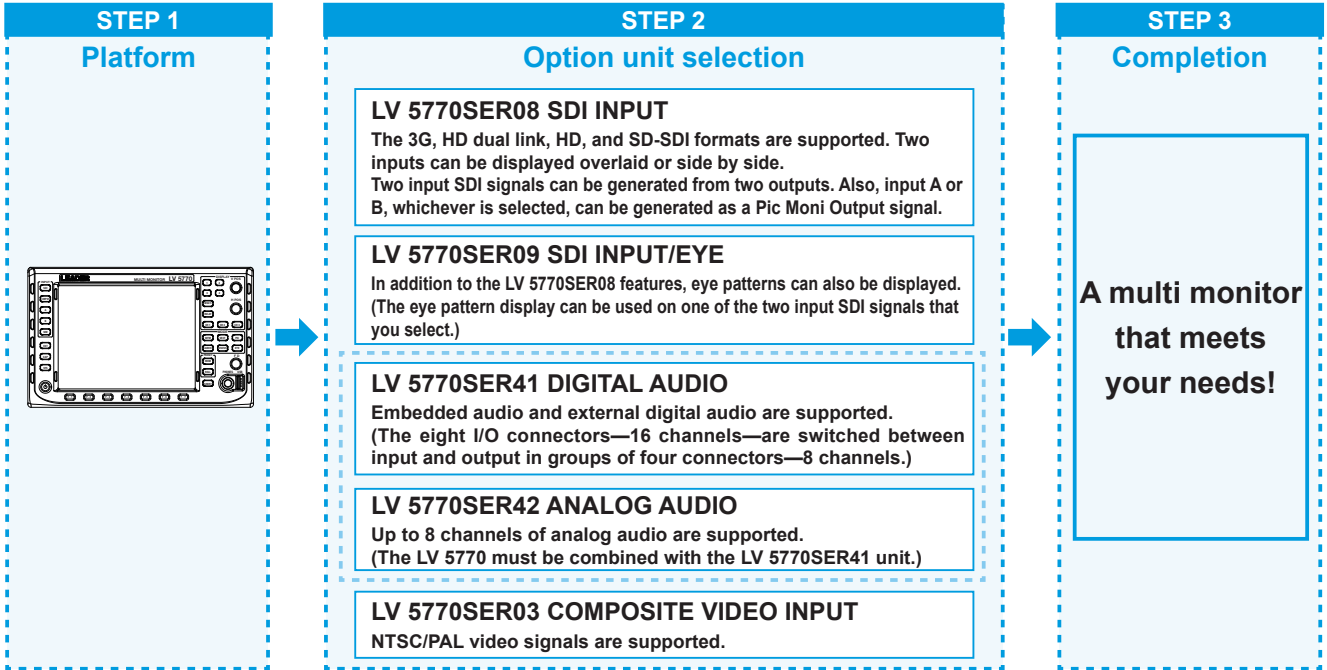


Loudness display (with the LV 5770SER41 installed)



Eye pattern display (with the LV 5770SER09 installed)

## System Configuration



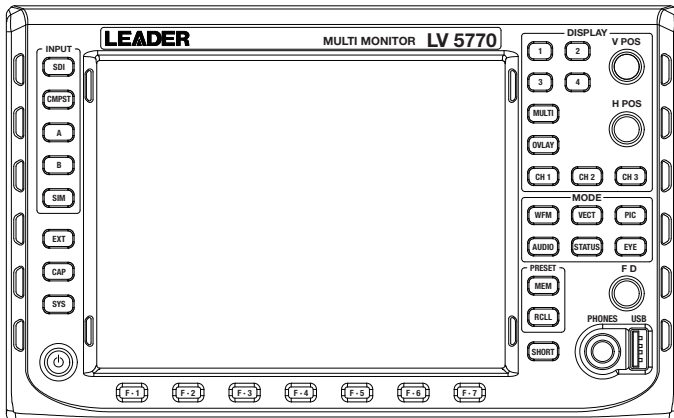
Note: The LV 5770SER08 and LV 5770SER09 cannot be installed in the LV 5770 at the same time.

### Table of Option Unit Combinations

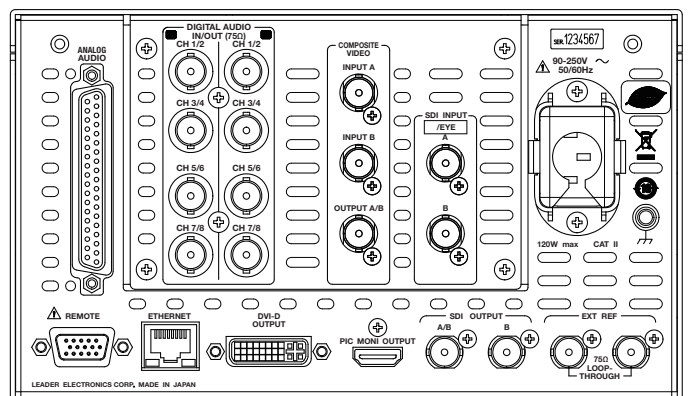
Combinations	LV 5770SER03	LV 5770SER08	LV 5770SER09	LV 5770SER41	LV 5770SER42
	COMPOSITE VIDEO INPUT	SDI INPUT	SDI INPUT/EYE	DIGITAL AUDIO	ANALOG AUDIO
	No	Yes	No	No	No
	No	Yes	No	Yes	No
	No	Yes	No	Yes	Yes
	No	No	Yes	No	No
	No	No	Yes	Yes	No
	No	No	Yes	Yes	Yes
	No	No	No	Yes	No
	No	No	No	Yes	Yes
	Yes	Yes	No	No	No
	Yes	Yes	No	Yes	No
	Yes	Yes	No	Yes	Yes
	Yes	No	Yes	No	No
	Yes	No	Yes	Yes	No
	Yes	No	Yes	Yes	Yes
	Yes	No	No	Yes	No
	Yes	No	No	Yes	Yes
	Yes	No	No	No	No

Note: The LV 5770SER08 and LV 5770SER09 cannot be installed in the LV 5770 at the same time. The LV 5770SER42 cannot be used unless the LV 5770SER41 is also installed in the LV 5770.

### ■ Front Panel



### ■ Rear Panel



Example of an LV 5770 with an LV 5770SER03, LV 5770SER09, LV 5770SER41, and LV 5770SER42 installed.

(Connect Pic Moni Output to a monitor that supports HDMI input.)